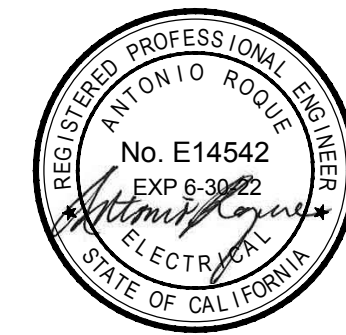
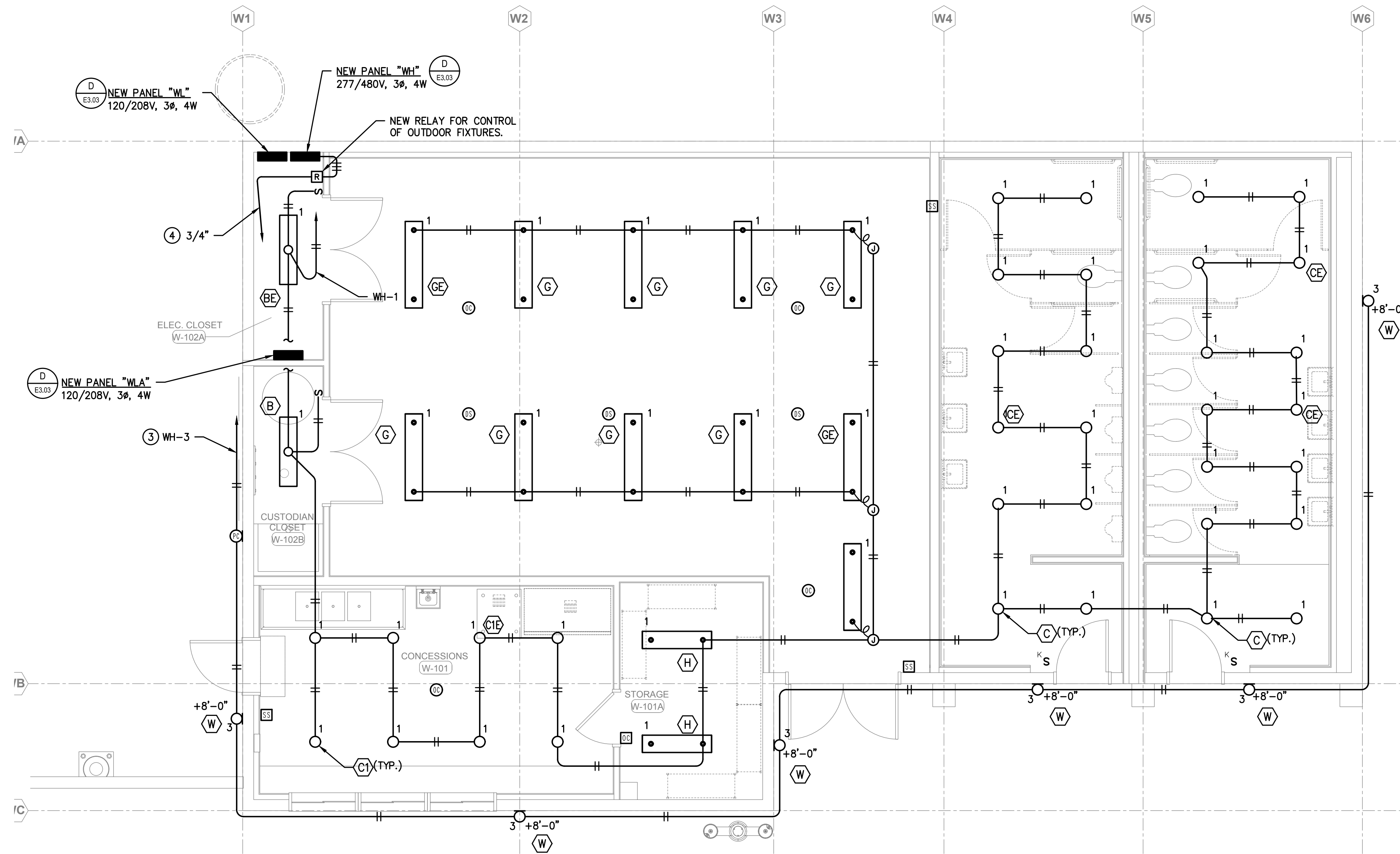


REVISIONS



1909B.MOD
TURPIN & RATTAN
ENGINEERING, INC.
CONSULTING ENGINEERS
10000 JEFFERSON BLVD., SUITE 200
MONTROSE, CA 91328-1855
818 / 249 / 0444 FAX 818 / 1487



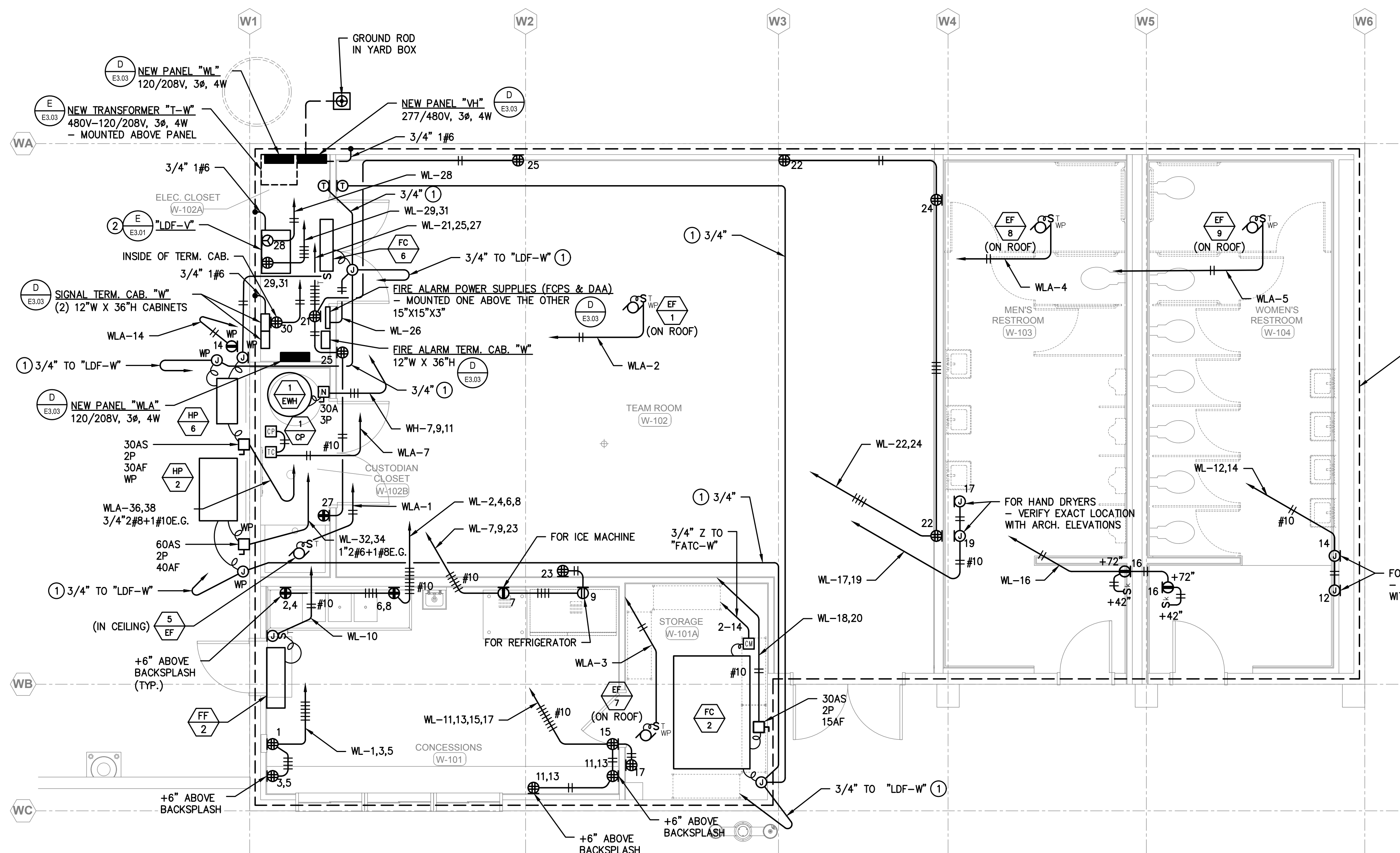
FIELDHOUSE (VISITOR) FLOOR PLAN - LIGHTING

SCALE: 1/4" = 1'-0"



KEY NOTES - THIS SHEET ONLY

- REFER TO MECHANICAL CONTROL DIAGRAMS (M0.03 & M0.04) FOR CABLE/CONDUCTOR REQUIREMENTS.
- LOCATE TRANE BAGNET INTERFACE, NETWORK LINK AND CONTROL PANEL IN IDF/LDF CABINET - COORDINATE LOCATION IN THE FIELD WITH CONTROLS CONTRACTOR.
- CIRCUIT FOR EXTERIOR LIGHTING SHALL BE CONNECTED TO A NEW RELAY LOCATED ADJACENT TO PANEL "WH". NEW RELAY SHALL BE CONTROLLED BY THE "AUTOMATED LOGIC CORPORATION" CONTROL SYSTEM.
- TO LDF-W, CONNECT TO NEW "ALC" CONTROLS. COORDINATE CABLE/CONDUCTORS REQUIRED WITH CONTROL CONTRACTOR.



FIELDHOUSE (VISITOR) FLOOR PLAN - POWER

SCALE: 1/4" = 1'-0"



NORWALK LA MIRADA UNIFIED SCHOOL DISTRICT
LA MIRADA HIGH SCHOOL NEW FOOTBALL
STADIUM PROJECT
13520 ADELA DRIVE, LA MIRADA, CA 90638

DSA # 03-120551

NAC
ARCHITECTURE

NAC NO. 161-19015
DATE 12/10/2020

DSA BACKCHECK
SUBMISSION

FLOOR PLANS
BUILDING "W" -
LIGHTING & POWER

E7.03